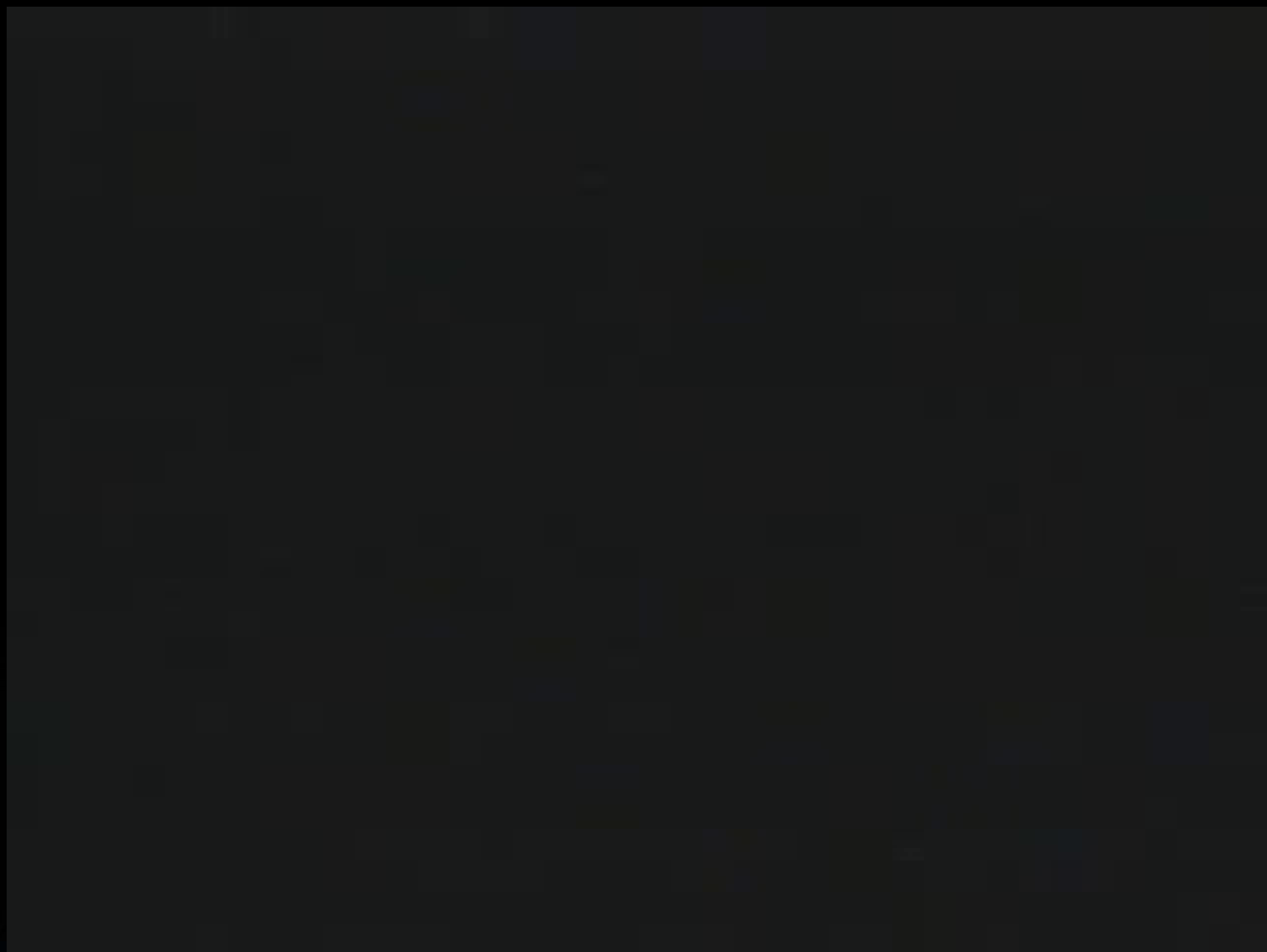




# Crime Prevention Through Environmental Design (CPTED)

Robert Prady CPP PSP CHS

May 2014



# Crime Prevention Through Environmental Design (CPTED)





A vertical timeline on a dark blue background with a faint pattern of white circles and lines. The timeline consists of five horizontal bars, each containing a year in a white circle on the left and a title in a white box on the right. The years are 1961, 1972, 1991, 1997, and 2008. The titles are 'Death and Life of Great American Cities (Jane Jacobs)', 'Defensible Space (Oscar Newman)', 'CPTED 1<sup>st</sup> Generation (Crowe)', '2<sup>nd</sup> Generation CPTED (Cleveland/Saville)', and '21st Century Security and CPTED (Randy Atlas)'.

1961 Death and Life of Great American Cities (Jane Jacobs)

1972 Defensible Space (Oscar Newman)

1991 CPTED 1<sup>st</sup> Generation (Crowe)

1997 2<sup>nd</sup> Generation CPTED (Cleveland/Saville)

2008 21st Century Security and CPTED (Randy Atlas)



# Crime Prevention Through Environmental Design (CPED)

S

Surveillance

A

Access

T

Territoriality



# Crime Prevention Through Environmental Design (CPED)



## Surveillance

- Criminals do not wish to be observed
- Natural line of sight
- Good lighting





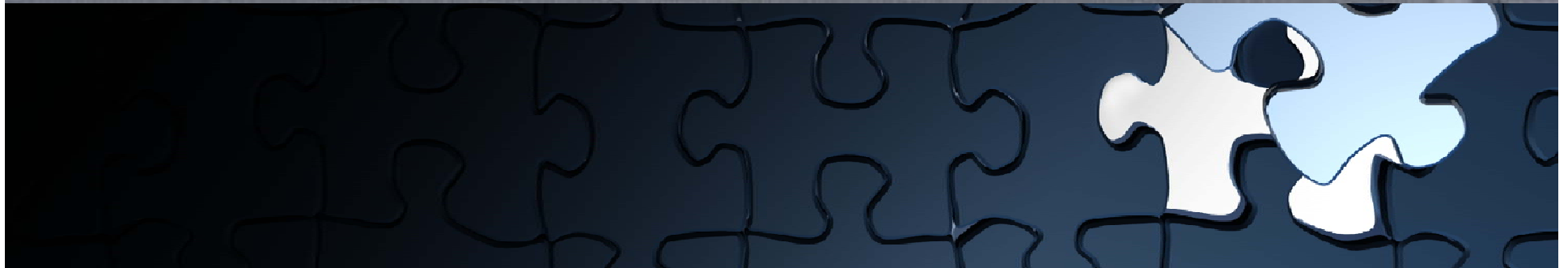


















# Crime Prevention Through Environmental Design (CPED)



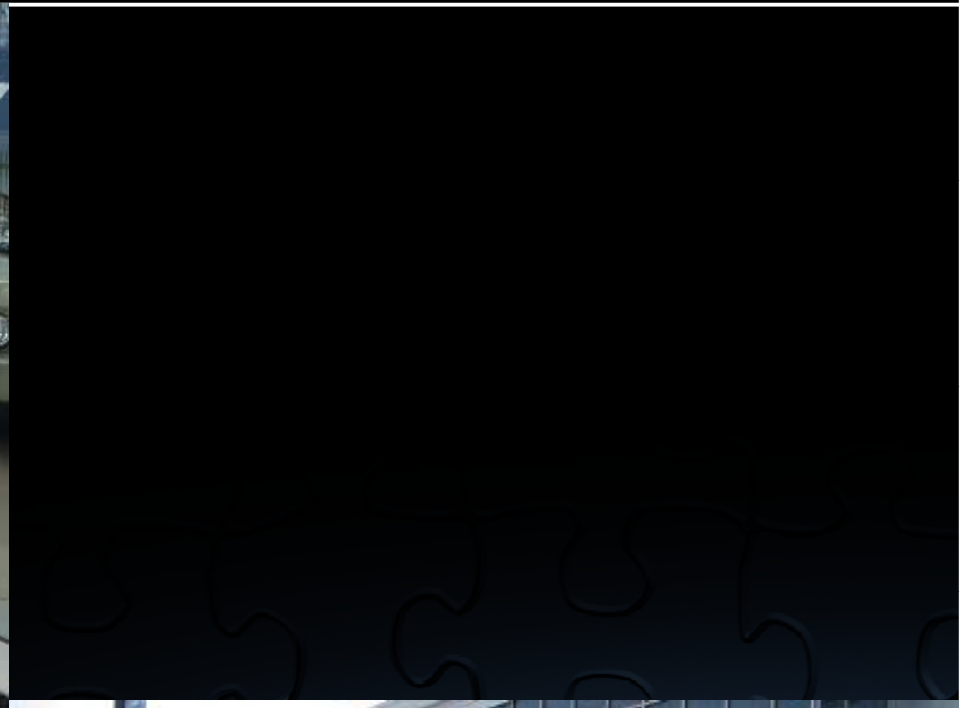
A

## Access

- Use barriers to define space use
- Direct traffic with barriers
- Impede movement







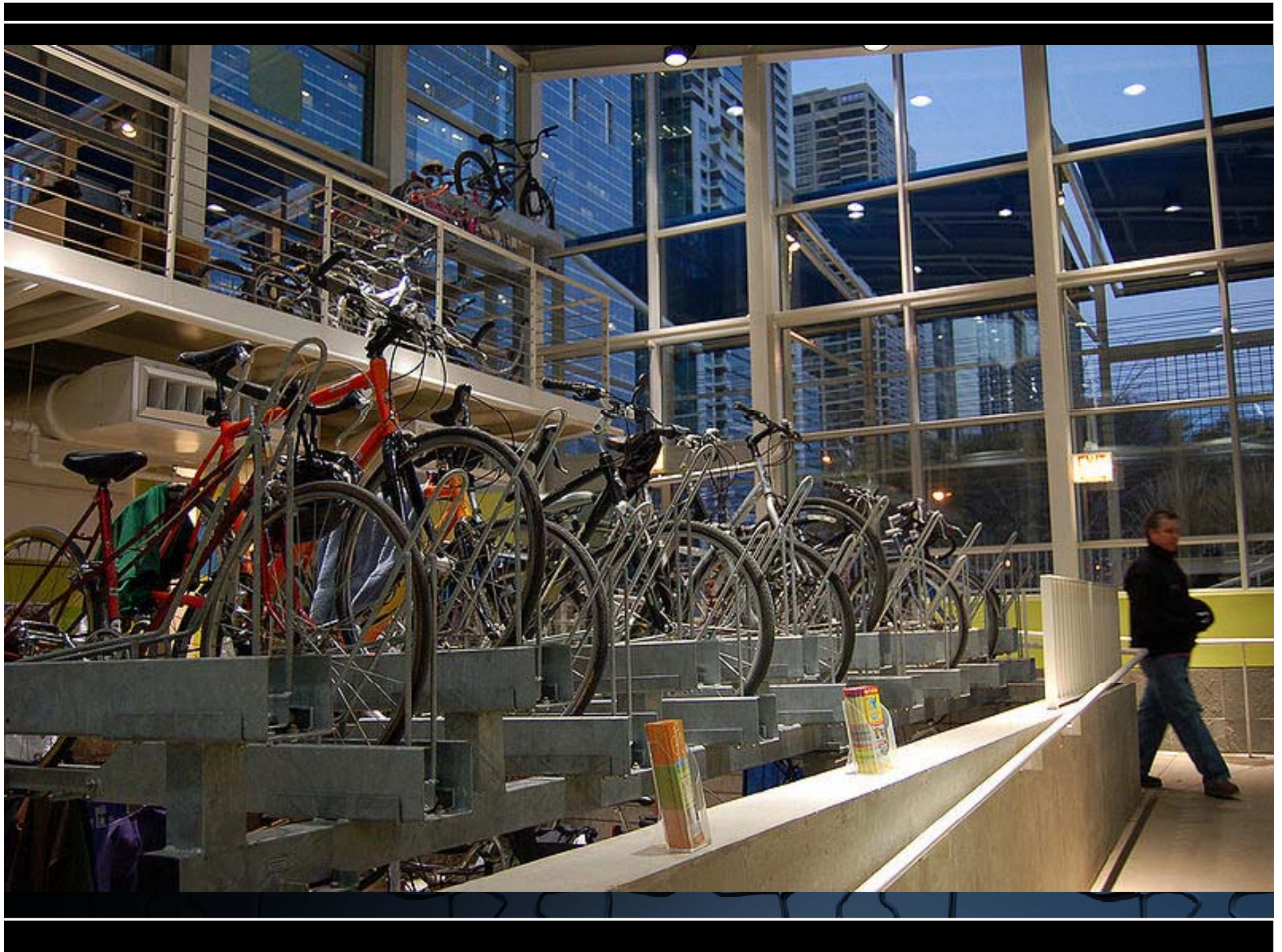






© Apex









# Crime Prevention Through Environmental Design (CPED)



## Territoriality

- Maintain an appearance of ownership
- Encourage a sense of community
- Undesired behavior not welcome













# Physical Security Cornerstone Principals

D

Deter

D

Detect

D

Delay

R

Respond





# Physical Security Cornerstone Principals



## Deter

- Make the target difficult to obtain
- Reduce chance of success
- Increase likelihood of prosecution





# Physical Security Cornerstone Principals



## Detect

- Use human assets and electronic systems to detect activity
- Make the detection known in the vicinity



# Physical Security Cornerstone Principals



## Delay

- Slow the offender
- The grater the delay the grater the chance of apprehension



# Physical Security Cornerstone Principles



R

## Respond

- Respond to the breach quickly
- The response should match the asset









# Crime Prevention Through Environmental Design (CPED)

S

Surveillance

A

Access

T

Territoriality



# Physical Security Cornerstone Principals

D

Deter

D

Detect

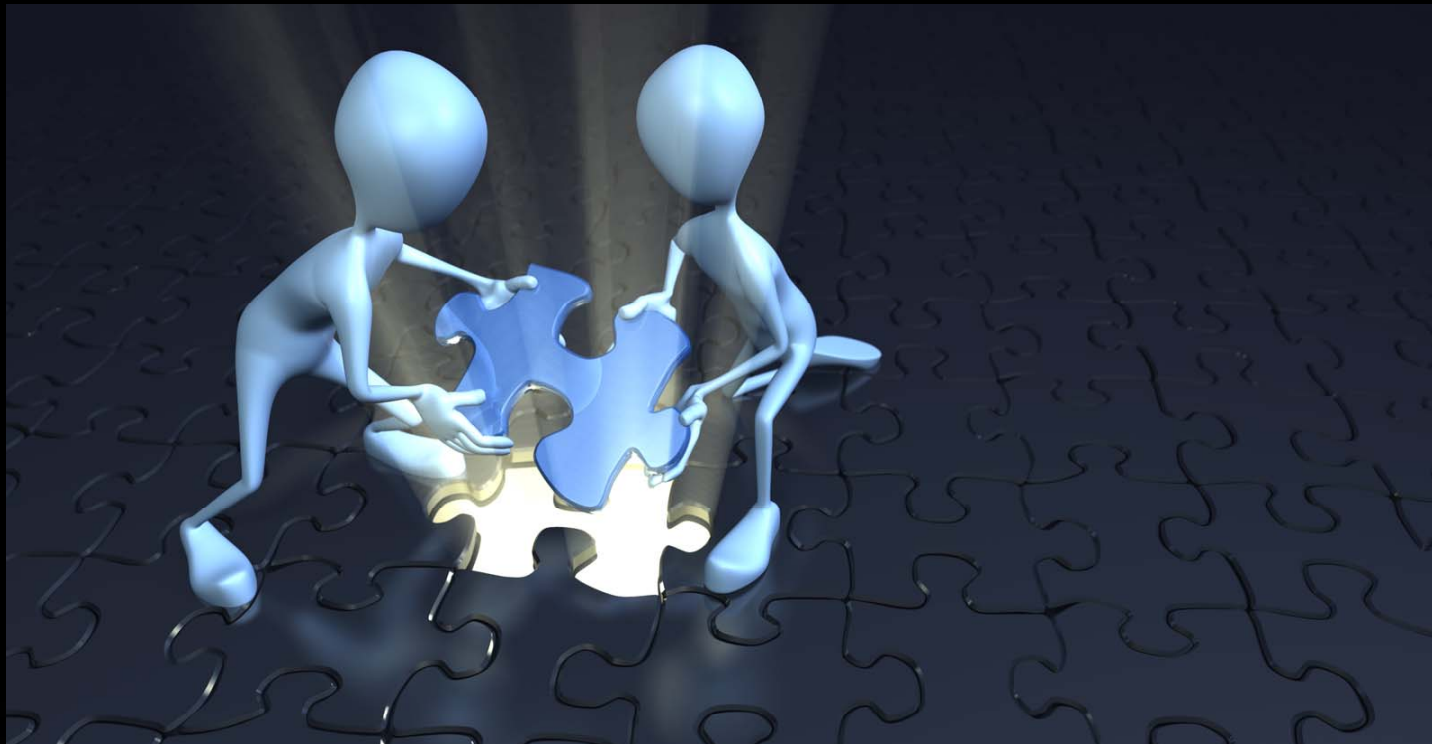
D

Delay

R

Respond





**Robert Prady CPP PSP CHS**

Integrity Networks

[RobertP@Integrity-net.net](mailto:RobertP@Integrity-net.net)

425-757-4150

